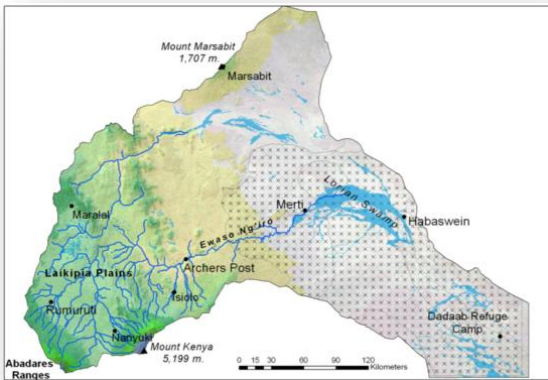


Mount Kenya Ewaso Water Partnership

Maji yetu, Jukumu letu

Our water, Our responsibility



The Challenge: managing a critical catchment

The uneven distribution of water throughout the Ewaso Ng'iro North Catchment, the largest of five water catchments in Kenya, has been exacerbated by climate change and current agricultural practices. Concentration of the area's water resources in the south western part of the catchment—home to two of Kenya's water towers—coupled with the region's high population density and settlement have led to intensive use of, competition for, and conflict over existing water resources. In addition, the catchment's limited storage capacity is insufficient to sustain the

region year round. Although a variety of institutions have been established to address many of these challenges, weak institutional linkages, conflicting mandates and financial constraints have limited effective implementation of water resource management and conservation in the area.

Objectives: Driving action through partnership

Launched in October 2016, the Mount Kenya Ewaso Water Partnership—MKEWP— is a partnership of public, private and civil society acceptable, economically favourable management of water resources in the Spearheaded by the County Kenya Growers Group, and supported Group, the partnership will provide a management and conservation can be North Catchment area—an area of through collective actions that balance the social, economic and environmental demands on water resources equitably.



organisations committed to socially and environmentally sustainable Ewaso Ng'iro North Catchment area. Government of Laikipia and Mount by the Kenya 2030 Water Resources mechanism by which water access, use, addressed in the Upper Ewaso Ng'iro approximately 15,000 square kilometres,

Action: Three counties, one partnership

The platform will address challenges surrounding:

- **Water allocation and use management.** The partnership aims to develop systems and strategic allocation plans to ensure water quantity and quality reserved for the maintenance of ecosystems, human consumption, agriculture, and industry are sustainably and effectively managed.
- **Water resource infrastructure development.** Given the region's potential for water storage, developing infrastructure both at household and community level will be instrumental in ensuring water security needs of the region taking into consideration current scarcity of suitable dam sites and the effects of climate change.
- **Institutional capacity in the catchment.** In the absence of existing monitoring and enforcement of water abstractions, discussions surrounding allocations across sectors and water using groups is unlikely to adequately progress. Effective regulation is therefore a pre-condition for effective allocation decisions. Strengthening water abstraction, monitoring and regulation, in addition to creating proper incentives for monitoring and enforcement will be instrumental to the effective management of water in the catchment.



Principles governing the Partnership include:

- Safe, secure, and sustainable water supply and access
- Sustainable water resources management is central to the survival and livelihoods of all Upper Ewaso Ng'iro North Water Basin inhabitants and integrity of the environment
- Water is a resource that must be shared efficiently and equitably
- Water resources management is a shared responsibility and is anchored in national documents including Vision 2030, the Water Act, the Laikipia Water Conservation Strategy 2014-2018, the National Water Resources Management Strategy, the National Water Services Strategy, ENNCA Catchment Management Strategy 2014-2022, Master plan for Conservation and Sustainable Management of Water Catchment Areas in Kenya 2012
- Capitalise on the sources of local and national funding in support of Basin solutions
- Integrated Water Resources Management must be practiced across individual sub-catchment and administrative lines for it to be effective
- Recognition of the roles and mandates of national and county governments in water resource management, catchment management, and provision of water and sanitation services, and through the action of the Partnership to add value to the work of the authorities



Current Partners

Bondet Farm ♦ Centre for Training and Integrated Research In ASAL Development - CETRAD ♦ Ewaso Ng'iro basin WRUA Forum ♦ Ewaso Ng'iro North Development Authority ♦ IMPACT Kenya ♦ Kenya 2030 Water Resources Group ♦ Kenya Forest Service ♦ Kenya Horticultural Growers ♦ Kenya Wildlife Service ♦ Kisima Farm ♦ Laikipia County Government ♦ Laikipia Wildlife Forum ♦ Meru County Government ♦ Mount Kenya Trust ♦ Mpala Research Centre ♦ Naibung'a Conservancy ♦ Nanyuki Water and Sewerage Company ♦ Naromoru WRUA ♦ National Drought Management Authority ♦ Ngusishi WRUA ♦ Nyeri County Government ♦ OI Pejeta Conservancy ♦ Rural Focus ♦ Soyian Ranch ♦ Tambuzi Farm ♦ Uhuru Flowers ♦ Water Resource Management Authority-WRMA ♦ Water Services Trust Fund ♦ Zeitz Foundation

Secretariat

Laikipia Wildlife Forum manages the Secretariat for the Mount Kenya Ewaso Water Partnership and is responsible for:

- Leading fundraising efforts;
- Coordinating key activities such as meetings geared towards the growth of the partnership;
- Supporting the Partnership's communications needs;
- Assisting with partner networking;
- Managing the growth of membership and supporting related activities; and
- Provide auditing, monitoring and evaluation services.



For more information about MKEWP, please contact:

James Mwangi | Laikipia Wildlife Forum | james.mwangi@laikipia.org